

P11 & P12

Trackpants

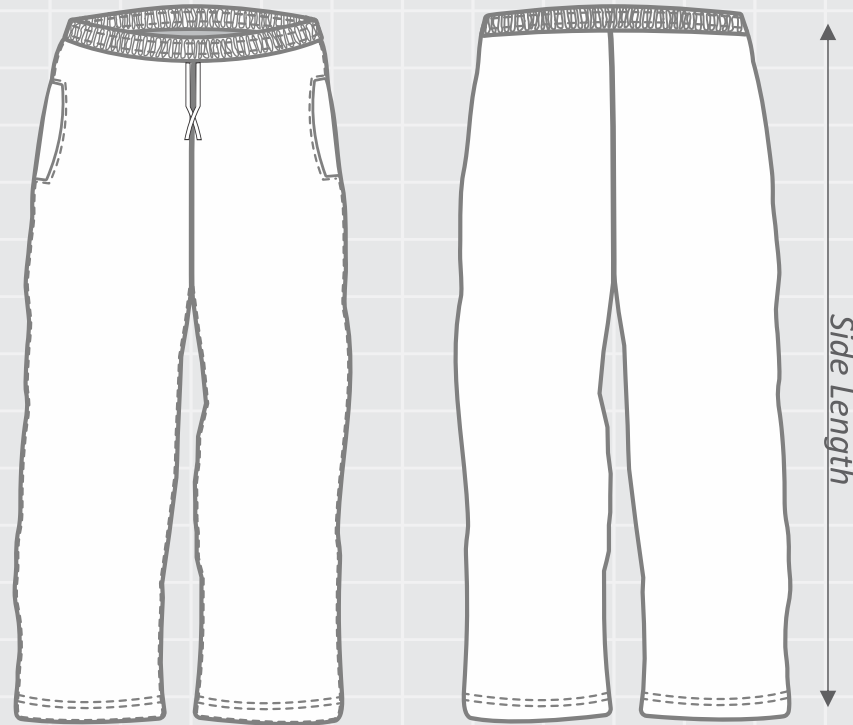
Unisex & Childrens



#GAMEClothing

f @GameClothing

ig @Game_Clothing_Aus



| Size | C8 | C10 | C12 | C14 | 2XS | XS | S | M | L | XL | 2XL | 3XL | 4XL |
|-------------------|-------|-------|-------|-------|-------|-------|-------|-------|--------|---------|---------|---------|---------|
| To Fit Waist (cm) | 59-65 | 64-70 | 69-75 | 74-80 | 76-82 | 80-86 | 84-90 | 90-96 | 96-102 | 100-106 | 104-110 | 108-114 | 112-118 |
| Side Length (cm) | 80 | 85 | 90 | 95 | 105 | 107 | 107 | 109 | 109 | 111 | 111 | 111 | 111 |

WAIST - Measure around your waist where you normally wear your pants, keeping the tape horizontal.
If your measurements fall between two sizes, choose the smaller size for a tighter fit or the larger size for a looser fit.
Measurements can vary by +/- 2cm.